

# The Muffin Man

## Sheet music in all twelve keys for bass

Greetings from Filenzi! This file is in Adobe Acrobat PDF format, and contains the sheet music in all twelve keys. The first key is A-flat, and then the music progresses through each half-step until the key of G is reached. The key is notated under each title.

This product is designed to print “portrait” using 8 1/2” x 11” paper.

The page that follows contains a key signature chart. Should you wish to play along with another person using Filenzi sheet music written for a different instrument, you can find how to line up the keys. If you are certain you are playing the music correctly, but it sounds “terrible” when you try to play with the other person(s), there is a very good chance you are accidentally playing in different keys at the same time.

Filenzi sheet music is designed to work together. Compatibility with non-Filenzi creations is not guaranteed. Purchase of this product is made on a single-user, non-transferable basis. Without limiting the rights reserved under copyright law, the following actions are all prohibited uses pertaining to any part of this product: file-sharing, scanning, re-selling, renting, sub-licensing, making copies or printouts for others, repackaging, rebranding, modifying, translating into other media or media forms, reverse-engineering or attempting to discover or alter the document source code or contents, uploading to the internet, posting or transmitting images or data files, storing or introducing into a retrieval system, or transmitting in any form or by any means without prior express written consent of the copyright owner.

Filenzi

# Key Signature Chart: Filenzi

Bass	Clarinet	Flute	Guitar	Piano	Trumpet	Violin
A flat	B flat	A flat	A flat	A flat	B flat	A flat
A	B	A	A	A	B	A
B flat	C	B flat	B flat	B flat	C	B flat
B	D flat	B	B	B	D flat	B
C	D	C	C	C	D	C
D flat	E flat	D flat	D flat	D flat	E flat	D flat
D	E	D	D	D	E	D
E flat	F	E flat	E flat	E flat	F	E flat
E	G flat	E	E	E	G flat	E
F	G	F	F	F	G	F
F sharp	A flat	G flat	F sharp	G flat	A flat	G flat
G	A	G	G	G	A	G

The above chart will help you determine how to play your Filenzi sheet music with another player who is using Filenzi sheet music written for a different instrument. Simply look across any particular row. Those keys will line up with each other pertaining to each respective instrument.

## Example 1:

You are a bass player. You are playing in the key of A. A clarinet player should play in B, a piano player should play in A.

## Example 2:

You are a trumpet player. You are playing in the key of A flat. A bass player should play in the key of F sharp, and a violin player should play in the key of G flat.

## Example 3:

A trumpet player is playing in the key of G. You are a piano player. Find the row where the trumpet player has G written in its column. Then look across to the piano column. That tells you the piano should be playing in the key of F.

# The Muffin Man

Traditional

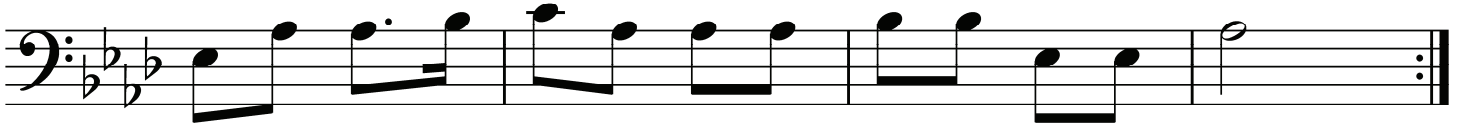
Bass: A-flat major

Moderately Fast



*mf*

Do you know the muf - fin man, the muf - fin man, the muf - fin man  
Yes, I know the muf - fin man, the muf - fin man, the muf - fin man



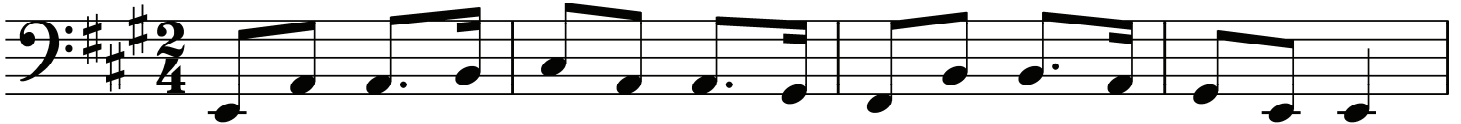
Do you know the muf - fin man who lives on Dru - ry Lane?  
Yes, I know the muf - fin man who lives on Dru - ry Lane.

# The Muffin Man

Traditional

Bass: A major

Moderately Fast



*mf*

Do you know the muf - fin man, the muf - fin man, the muf - fin man  
Yes, I know the muf - fin man, the muf - fin man, the muf - fin man



Do you know the muf - fin man who lives on Dru - ry Lane?  
Yes, I know the muf - fin man who lives on Dru - ry Lane.

# The Muffin Man

Traditional

Bass: B-flat major

Moderately Fast



*mf*

Do you know the muf - fin man, the muf - fin man, the muf - fin man  
Yes, I know the muf - fin man, the muf - fin man, the muf - fin man



Do you know the muf - fin man who lives on Dru - ry Lane?  
Yes, I know the muf - fin man who lives on Dru - ry Lane.



# The Muffin Man

Traditional

Bass: C major

Moderately Fast



*mf*

Do you know the muf - fin man, the muf - fin man, the muf - fin man  
Yes, I know the muf - fin man, the muf - fin man, the muf - fin man



Do you know the muf - fin man who lives on Dru - ry Lane?  
Yes, I know the muf - fin man who lives on Dru - ry Lane.

# The Muffin Man

Traditional

Bass: D-flat major

Moderately Fast



*mf*

Do you know the muf - fin man, the muf - fin man, the muf - fin man  
Yes, I know the muf - fin man, the muf - fin man, the muf - fin man



Do you know the muf - fin man who lives on Dru - ry Lane?  
Yes, I know the muf - fin man who lives on Dru - ry Lane.



# The Muffin Man

Traditional

Bass: D major

Moderately Fast



*mf*

Do you know the muf - fin man, the muf - fin man, the muf - fin man  
Yes, I know the muf - fin man, the muf - fin man, the muf - fin man



Do you know the muf - fin man who lives on Dru - ry Lane?  
Yes, I know the muf - fin man who lives on Dru - ry Lane.

# The Muffin Man

Traditional

Bass: E-flat major

Moderately Fast



*mf*

Do you know the muf - fin man, the muf - fin man, the muf - fin man  
Yes, I know the muf - fin man, the muf - fin man, the muf - fin man



Do you know the muf - fin man who lives on Dru - ry Lane?  
Yes, I know the muf - fin man who lives on Dru - ry Lane.

# The Muffin Man

Traditional

Bass: E major

Moderately Fast



*mf*

Do you know the muf - fin man, the muf - fin man, the muf - fin man  
Yes, I know the muf - fin man, the muf - fin man, the muf - fin man



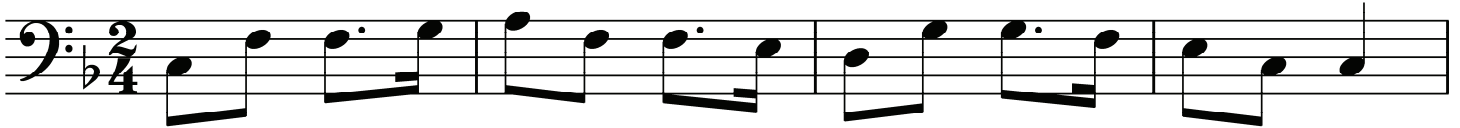
Do you know the muf - fin man who lives on Dru - ry Lane?  
Yes, I know the muf - fin man who lives on Dru - ry Lane.

# The Muffin Man

Traditional

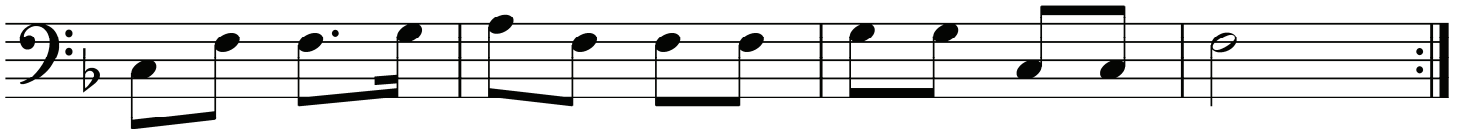
Bass: F major

Moderately Fast



*mf*

Do you know the muf - fin man, the muf - fin man, the muf - fin man  
Yes, I know the muf - fin man, the muf - fin man, the muf - fin man



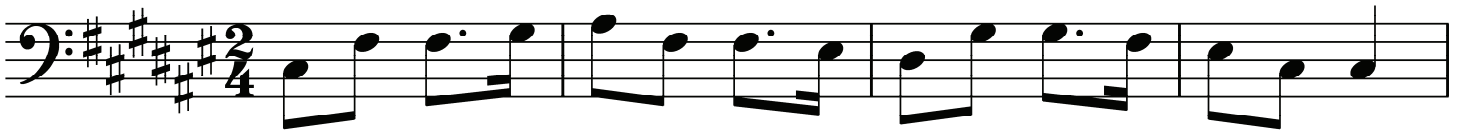
Do you know the muf - fin man who lives on Dru - ry Lane?  
Yes, I know the muf - fin man who lives on Dru - ry Lane.

# The Muffin Man

Traditional

Bass: F-sharp major

Moderately Fast



*mf*

Do you know the muf - fin man, the muf - fin man, the muf - fin man  
Yes, I know the muf - fin man, the muf - fin man, the muf - fin man



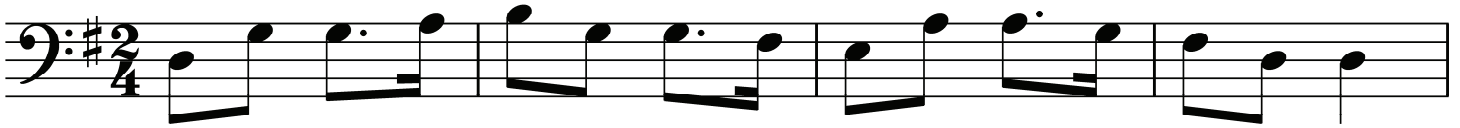
Do you know the muf - fin man who lives on Dru - ry Lane?  
Yes, I know the muf - fin man who lives on Dru - ry Lane.

# The Muffin Man

Traditional

Bass: G major

Moderately Fast



*mf*

Do you know the muf - fin man, the muf - fin man, the muf - fin man  
Yes, I know the muf - fin man, the muf - fin man, the muf - fin man



Do you know the muf - fin man who lives on Dru - ry Lane?  
Yes, I know the muf - fin man who lives on Dru - ry Lane.